



Gibbs Close

Harpenden, AL5 1FA

Beautifully presented, three-bedroom, mid-terrace home of circa 1633 sq ft with a low maintenance, private garden in this modern development, moments from both the High Street and the Common and a short walk to the station. Additional benefit of one secure, allocated underground parking space (with power and lighting), one space to front of the property and access to communal gardens.

** CHAIN FREE **

Guide price £1,195,000

Gibbs Close

Harpenden, AL5 1FA



3



2



1



B

- Beautifully presented mid-terrace, three-bedroom home
- Bedroom One with dressing area and en-suite
- Moments from High Street and Common
- Circa 1633 sq ft.
- Prime Central location
- ** Chain free **
- Secure basement allocated parking
- Service Charge approx £1650 for garage and grounds
- Council Tax Band F

Entrance Hall

Cloakroom

Kitchen/Dining Room

24'1" x 14'2" (7.36 x 4.34)

Living Room

24'1" x 11'10" (7.36 x 3.62)

Landing

Bedroom One

14'2" x 11'11" (4.34 x 3.65)

Dressing Room

En-suite with bath & shower

Bedroom Two

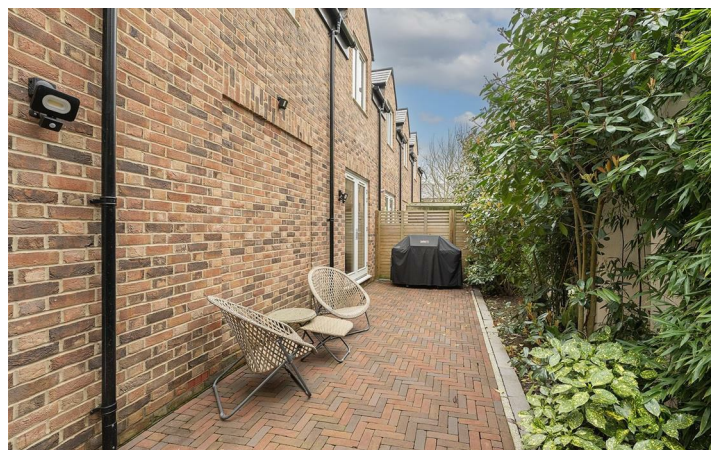
13'0" x 11'10" (3.98 x 3.62)

Bedroom Three

12'11" x 11'10" (3.96 x 3.62)

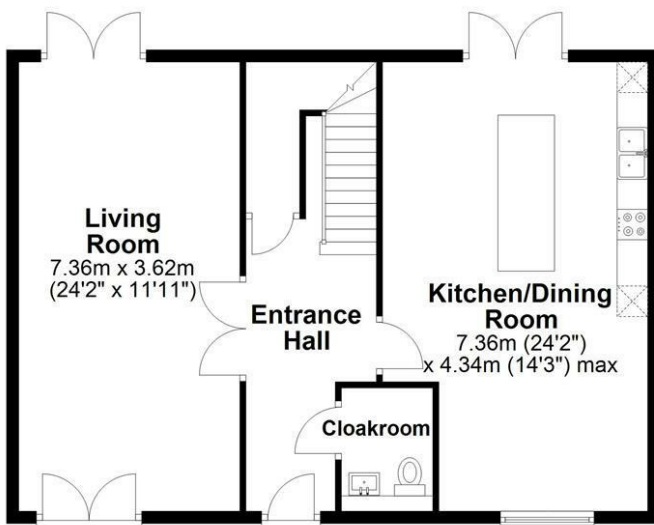
Bathroom





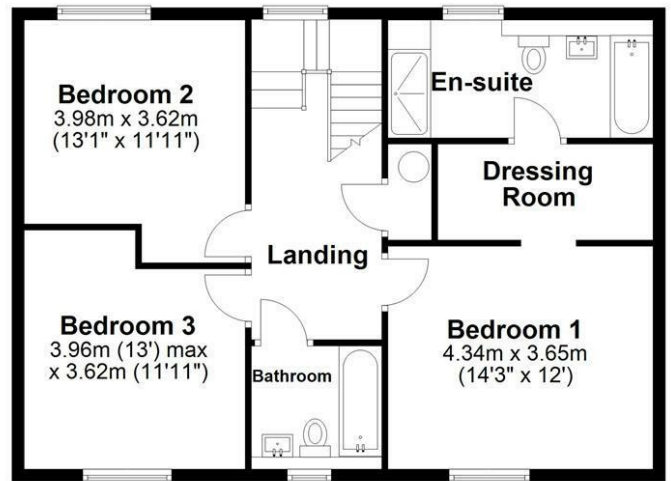
Ground Floor

Approx. 75.8 sq. metres (815.9 sq. feet)



First Floor

Approx. 76.0 sq. metres (817.6 sq. feet)



Total area: approx. 151.8 sq. metres (1633.6 sq. feet)

Sketch layout only. Not to scale. Plan produced for Whittaker & Co.

Plan produced using PlanUp.

These particulars, whilst believed to be accurate are set out as a general outline only for guidance and do not constitute any part of an offer or contract. Intending purchasers should not rely on them as statements of representation of fact, but must satisfy themselves by inspection or otherwise as to their accuracy. No person in this firm's employment has the authority to make or give any representation or warranty in respect of the property.

